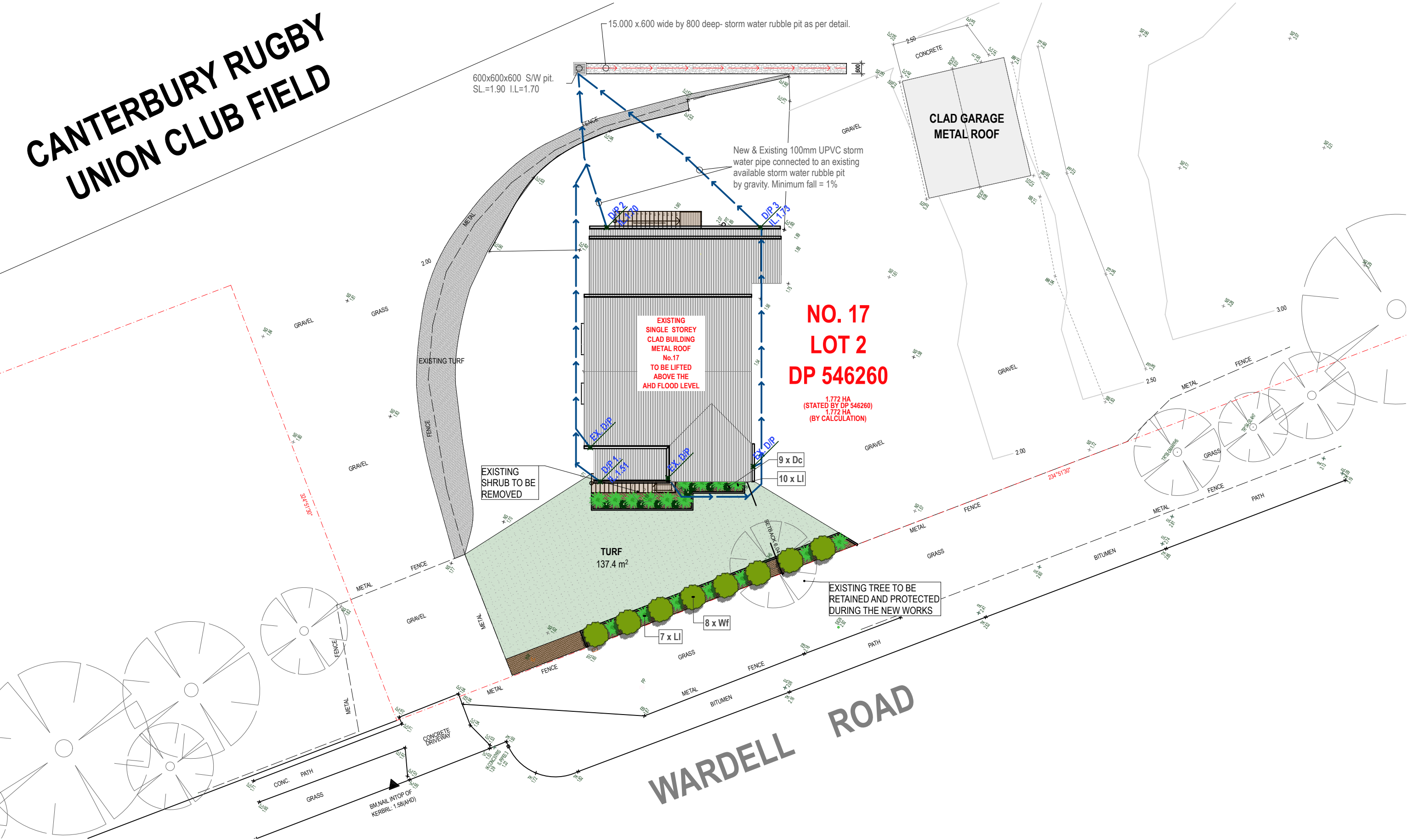


CANTERBURY RUGBY UNION CLUB FIELD



PROPOSED LANDSCAPING SITE PLAN 1:200

NOTES : DO NOT SCALE OFF DRAWINGS. USE FIGURED DIMENSIONS ONLY. CHECK ALL DIMENSIONS ON SITE BEFORE THE COMMENCEMENT OF WORK. REPORT ANY DISCREPANCIES. C.O.S DENOTES ITEM TO BE CHECKED ON SITE. ALL LEVELS ARE TO AHD AND HAVE BEEN DETERMINED FROM OSUM SURVEYING SERVICES P/L. AVAILABLE DETAILED SITE SURVEY INFORMATION BY THESE DESIGNS, PLANS AND SPECIFICATIONS AND THE COPYRIGHT THEREIN ARE THE PROPERTY OF TOPIO GRAPHICA LANDSCAPE ARCHITECTS. AND MUST NOT BE USED, REPRODUCED OR COPIED WHOLLY OR IN PART WITHOUT THE WRITTEN PERMISSION OF TOPIO GRAPHICA LANDSCAPE ARCHITECTS.				This drawing is issued upon the condition it is not copied, reproduced, retained or disclosed to any unauthorised person either wholly or in part without prior consent in writing of Topia Graphica Landscape Architects.		Canterbury Rugby Union Club 17 Wardell Rd Earlwood NSW client	LIFTING OF EXISTING ANCILLARY STRUCTURE TO ABOVE APPROVED FLOOD LEVEL project 17 Wardell Road Earlwood address	 Irene Thanogiannis AILA Registered Landscape Architect Reg # 001522 B.L Arch (Hons) 334A Homer Street, Earlwood ph: 0401 684 015 e: topio.graphica@bigpond.com abn:17 349 286 848	 Tr N	LANDSCAPING SITE PLAN drawing 125-173 LP11 A project drawing no. issue 31/1/2025		
A	DA SUBMISSION	31.01.25		rev	notes	date						

LANDSCAPE SPECIFICATION

NATSPEC
SUBSCRIBER NO. 24016892

1. SITE PREPARATION
REQUIREMENT: CLEAR ONLY AREAS OCCUPIED BY WORKS SUCH AS STRUCTURES, PAVING, EXCAVATION, REGRADING AND LANDSCAPING OR OTHER AREAS DOCUMENTED FOR CLEARING. CONTRACTOR'S SITE AREAS: IF NOT INCLUDED WITHIN THE AREAS DOCUMENTED ABOVE, CLEAR ONLY TO THE EXTENT NECESSARY FOR THE PERFORMANCE OF THE WORKS.

CLEARING AND GRUBBING
CLEARING: REMOVE EVERYTHING ON OR ABOVE THE SITE SURFACE, INCLUDING RUBBISH, SCRAP, GRASS, VEGETABLE MATTER AND ORGANIC DEBRIS, SCRUB, TREES, TIMBER, STUMPS, BOULDERS AND RUBBLE.
GRUBBING: GRUB OUT STUMPS AND ROOTS OVER 75 MM DIAMETER TO A MINIMUM DEPTH AS FOLLOWS:
- BELOW SUBGRADE UNDER BUILDINGS, EMBANKMENTS OR PAVING: 500 MM.
- BELOW FINISHED SURFACE IN UNPAVED AREAS: 300 MM.
BACKFILLING: FILL HOLES REMAINING AFTER GRUBBING WITH SAND MATERIAL TO PREVENT PONDING OF WATER. COMPACT THE MATERIAL TO THE RELATIVE DENSITY OF THE EXISTING ADJACENT GROUND MATERIAL.
REDUNDANT/DECOMMISSIONED WORKS: REMOVE WORKS NO LONGER REQUIRED, INCLUDING SLABS, FOUNDATIONS, PAVING, DRAIN, AND ACCESS CHAMBERS AND COVERS WITHIN THE WORKS ZONE.

BATTERS- TEMPORARY PROTECTION: IF THE CHANGE IN LEVEL BETWEEN CREST AND TOE IS MORE THAN 1500 MM, PROTECT FROM EROSION WITH GEOFABRIC, HESSIAN AND TAR OR HEAVY DUTY BLACK POLYETHYLENE SHEET COVER, SECURELY FIX DOWN AT CREST AND TOE.
SURPLUS MATERIAL- TOPSOIL AND EXCAVATED MATERIAL: REMOVE UNWANTED STRIPPED SOIL AND OTHER MATERIAL FROM THE SITE AS THE WORK PROCEEDS, INCLUDING ANY MATERIAL DROPPED ON FOOTPATHS OR ROADWAYS.

2. TOP-SOIL
IMPORTED TOPSOIL: SIMILAR TO LOCAL NATURAL SOIL, SUITABLE FOR THE ESTABLISHMENT AND ONGOING VIABILITY OF THE SELECTED VEGETATION, FREE OF WEED PROPAGULES AND OF CONTAMINANTS, AND CLASSIFIED BY TEXTURE TO **AS 4419 (2018)**.
PLACING TOPSOIL.
COMPOSTS, SOIL CONDITIONERS AND MULCHES: TO **AS 4454 (2012)**.
PLACING TOPSOIL
SPREADING: SPREAD THE TOPSOIL ON THE PREPARED SUBSOIL AND GRADE EVENLY, MAKING ALLOWANCES, IF APPROPRIATE, FOR THE FOLLOWING:
- REQUIRED FINISHED LEVELS AND CONTOURS AFTER LIGHT COMPACTION.
- GRASSED AREAS FINISHED FLUSH WITH ADJACENT HARD SURFACES SUCH AS KERBS, PATHS AND MOWING STRIPS.

STEEP BATTERS: IF USING A CHAIN DRAG FOR SPREADING, MAKE SURE THERE IS NO DANGER OF BATTER DISTURBANCE.
FINISHING: FEATHER EDGES INTO ADJOINING UNDISTURBED GROUND.

CONSOLIDATION
GENERAL: COMPACT LIGHTLY AND UNIFORMLY IN 150 MM LAYERS. AVOID DIFFERENTIAL SUBSIDENCE AND EXCESS COMPACTION AND PRODUCE A FINISHED TOPSOIL SURFACE THAT HAS THE FOLLOWING CHARACTERISTICS:
- FINISHED TO DESIGN LEVELS.
- SMOOTH AND FREE FROM STONES OR LUMPS OF SOIL.
- GRADED TO DRAIN FREELY, WITHOUT PONDING, TO CATCHMENT POINTS.
- GRADED EVENLY INTO ADJOINING GROUND SURFACES.
- READY FOR PLANTING.

TOPSOIL DEPTHS
GENERAL: SPREAD TOPSOIL TO THE FOLLOWING TYPICAL DEPTHS:
- EXCAVATED PLANTING AREAS:
FOR ORGANIC MULCH: 225 MM.
FOR GRAVEL MULCH: 250 MM.
- IRRIGATED GRASSED AREAS GENERALLY: 150 MM.
- IRRIGATED GRASSED AREAS, HEAVY USE (E.G. PLAYING FIELDS, PLAYGROUNDS AND PUBLIC PARKS): 200 MM.
- NON-IRRIGATED GRASS AREAS: 100 MM.
- EARTH MOUNDS:
MASS PLANTED SURFACES: 300 MM.
GRASSED SURFACES: 100 MM.
- TOP DRESSING: 10 MM.

3. PLANTING

GENERAL
PLANT LOCATION AND SPACING: IF NECESSARY TO VARY PLANT LOCATIONS AND SPACINGS TO AVOID SERVICE LINES, OR TO COVER THE AREA UNIFORMLY, OR FOR OTHER REASONS, GIVE NOTICE.

PLANTING CONDITIONS
WEATHER: DO NOT PLANT IN UNSUITABLE WEATHER CONDITIONS, INCLUDING EXTREME HEAT, COLD, WIND OR RAIN. IN OTHER THAN SANDY SOILS, SUSPEND EXCAVATION WHEN THE SOIL IS WET, OR DURING FROST PERIODS.

WATERING
TIMING: THOROUGHLY WATER THE PLANTS BEFORE PLANTING, IMMEDIATELY AFTER PLANTING, AND AS REQUIRED TO MAINTAIN GROWTH RATES FREE OF STRESS.

PREPARATION
INDIVIDUAL PLANTINGS IN GRASSED AREAS: PREPARE FOR PLANTING AS FOLLOWS:
- EXCAVATE A HOLE TWICE THE DIAMETER OF THE ROOTBALL AND AT LEAST 100 MM DEEPER THAN THE ROOTBALL.
- BREAK UP THE BASE OF THE HOLE TO A FURTHER DEPTH OF 100 MM.
- LOOSEN COMPACTED SIDES OF THE HOLE TO PREVENT CONFINEMENT OF ROOT GROWTH.
RIPLINE PLANTING: PREPARE FOR PLANTING AS FOLLOWS:

- RIP THE ROW AND EXCAVATE A PLANT HOLE FOR EACH PLANT LARGE ENOUGH TO ACCEPT THE ROOTBALL PLUS 0.1 M² OF BACKFILLING WITH TOPSOIL.
- CLEAR WEEDS AND OTHER VEGETATIVE MATERIAL WITHIN 300 MM RADIUS OF THE PLANTS.
- IF PLANTING HOLES ARE EXCAVATED BY MECHANICAL MEANS, INCREASE THE HOLE SIZE BY 100 MM AND LOOSEN COMPACTED SIDES TO PREVENT CONFINEMENT OF ROOT GROWTH.

PLACING
GENERAL: PLACE PLANTS AS FOLLOWS:
- REMOVE THE PLANT FROM THE CONTAINER WITH MINIMUM DISTURBANCE TO THE ROOTBALL. MAKE SURE THAT THE ROOTBALL IS MOIST.
- IF REQUIRED, ROOT PRUNE TO MAKE SURE ALL CIRCLING ROOTS HAVE BEEN EITHER SEVERED OR ALIGNED RADially INTO THE SURROUNDING SOIL.
- PLACE THE PLANT IN ITS FINAL POSITION, IN THE CENTRE OF THE HOLE AND PLUMB, AND WITH THE TOPSOIL LEVEL OF THE PLANT ROOTBALL LEVEL WITH THE FINISHED SURFACE OF THE SURROUNDING SOIL.

FERTILISING
PELLETS: IN PLANTING BEDS AND INDIVIDUAL PLANTINGS, PLACE FERTILISER PELLETS AROUND THE PLANTS AT THE TIME OF PLANTING.
ALL TREES ARE TO BE ADVANCED SPECIMENS IN 45 LITRE.

4. MULCHING
PLACE MULCH TO THE REQUIRED DEPTH AND CLEAR OF PLANT STEMS, SO THAT AFTER SETTLING IT CONFORMS TO THE FOLLOWING:
- SMOOTH AND EVENLY GRADED BETWEEN DESIGN SURFACE LEVELS.
- FLUSH WITH THE SURROUNDING FINISHED LEVELS.
- SLOPED TOWARDS THE BASE OF PLANT STEMS IN PLANTATION BED
- FOR GRAVEL MULCHES: NOT CLOSER TO THE STEM THAN 50 MM.

EXTENT: PROVIDE MULCH TO 750 MM DIAMETER TO SURROUNDS OF PLANTS PLANTED IN RIPLINES AND GRASSED AREAS.
DEPTHS:
- ORGANIC MULCH: 75 MM.
- GRAVEL MULCH: 50 MM.

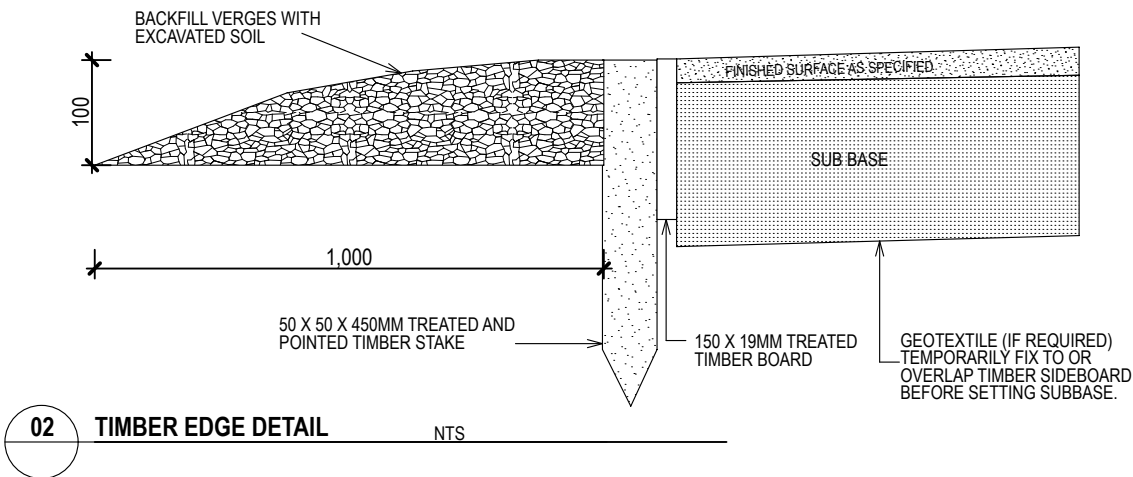
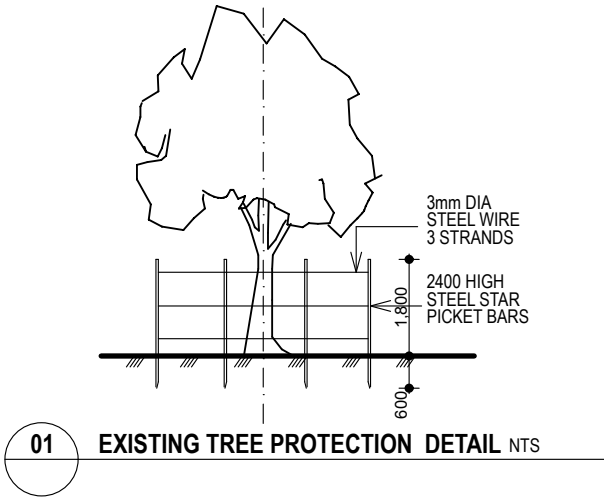
STABILISATION:
- LEAF LITTER, PINE FLAKE AND PINE BARK: PROVIDE STABILISATION ON SLOPES GREATER THAN 1:3
- RIVER PEBBLES AND GRAVELS: DO NOT USE ON SLOPES GREATER THAN 1:6.
INSTALLATION:
- IN RIPLINE AND GRASSED AREAS: PLACE MULCH TO 750 MM DIAMETER AROUND PLANTS.
- IN MASS PLANTED AREAS: PLACE AFTER THE PREPARATION OF THE PLANTING BED BUT BEFORE PLANTING AND OTHER WORK.
- IN SMALLER AREAS (E.G. PLANTER BOXES): PLACE AFTER THE PREPARATION OF THE PLANTING BED, PLANTING AND OTHER WORK.

5. ESTABLISHMENT

PLANTING
REQUIREMENT: MAKE SURE THE GENERAL APPEARANCE AND PRESENTATION OF THE LANDSCAPE AND THE QUALITY OF PLANT MATERIAL AT THE DATE OF PRACTICAL COMPLETION IS MAINTAINED FOR THE PLANTING ESTABLISHMENT PERIOD.
PLANT REPLACEMENT: REPLACE FAILED, DEAD AND/OR DAMAGED PLANTS AT MAXIMUM 3 WEEKLY INTERVALS AS NECESSARY THROUGHOUT THE PLANT ESTABLISHMENT PERIOD.
PRUNING: TO AS 4373 (2007) AND AS DOCUMENTED.
APPLICATION OF FERTILISER: APPLY EITHER AN ALL-PURPOSE FERTILISER OR A 12 MONTH SLOW RELEASE FERTILISER, IN TWO ROWS AND CULTIVATED INTO SOIL TO A DEPTH OF 100 MM.
- PROGRAM: SEPTEMBER AND MARCH ACCORDING TO SEASONAL GROWTH REQUIREMENT.

WEEDING: REMOVE UNWANTED BROAD-LEAF PLANTS AND GRASSES CONSIDERED INVASIVE TO THE LOCALITY.
REMULCHING: MAINTAIN THE ORIGINAL GROUND LEVELS AROUND THE BASE OF PLANTS.
WATERING: MINIMUM 3 COMPLETE WATERINGS, SOAKING TO A DEPTH OF 150 MM AT FORTNIGHTLY INTERVALS FOR THE FIRST 6 WEEKS OF PLANT ESTABLISHMENT IRRESPECTIVE OF NATURAL RAINFALL.

PLANTING SCHEDULE							
PLANT TYPE	PLAN SYMBOL	REF	NOMINATED SPECIES OR SIMILAR	QUAN-TITY	POT SIZE	STAKE	MATURE HEIGHT
01 SHRUBS							
		Wf	COASTAL ROSEMARY Westringia fruticosa	8	200MM	NO	2.0M
02 GROUNDCOVERS							
		Dc	BLUE FLAX-LILY Dianella caerulea	9	140MM	NO	1.0M
		LI	BASKET GRASS Lomandra longifolia	17	140MM	NO	1.0M
03 TURF							
		SIR WALTER DNA CERTIFIED BUFFALO		137.37 m²			



NOTES : DO NOT SCALE OFF DRAWINGS. USE FIGURED DIMENSIONS ONLY. CHECK ALL DIMENSIONS ON SITE BEFORE THE COMMENCEMENT OF WORK. REPORT ANY DISCREPANCIES. C/O.S DENOTES ITEM TO BE CHECKED ON SITE. ALL LEVELS ARE TO AHD AND HAVE BEEN DETERMINED FROM OSUM SURVEYING SERVICES P/L. AVAILABLE DETAILED SITE SURVEY INFORMATION BY THESE DESIGNS, PLANS AND SPECIFICATIONS AND THE COPYRIGHT THEREIN ARE THE PROPERTY OF TOPIO GRAPHICA LANDSCAPE ARCHITECTS AND MUST NOT BE USED, REPRODUCED OR COPIED WHOLLY OR IN PART WITHOUT THE WRITTEN PERMISSION OF TOPIO GRAPHICA LANDSCAPE ARCHITECTS.		This drawing is issued upon the condition it is not copied, reproduced, retained or disclosed to any unauthorised person either wholly or in part without prior consent in writing of Topia Graphica Landscape Architects.		Canterbury Rugby Union Club 17 Wardell Rd Earlwood NSW client	LIFTING OF EXISTING ANCILLARY STRUCTURE TO ABOVE APPROVED FLOOD LEVEL project 17 Wardell Road Earlwood address	 Irene Thanogiannis AILA Registered Landscape Architect Reg # 001522 B.L Arch (Hons) 334A Homer Street, Earlwood ph: 0401 684 015 e: topio.graphica@bigpond.com abn:17 349 286 848	 LANDSCAPING PLANTING SCHEDULE AND DETAILS drawing 125-173 project LP12 drawing no. A issue 31/1/2025
A		DA SUBMISSION	31.01.25						
rev		notes	date						